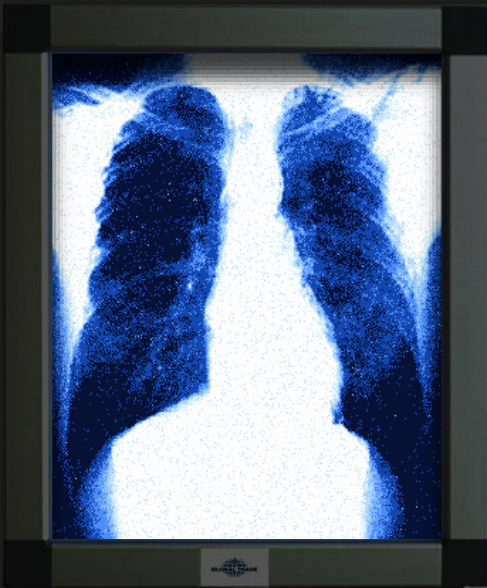


# A to B – Assessment





A to B - Assessment




- A • Airway
- B • Breathing
- C • Circulation
- D • Disability
- E • Exposure

assessment



  
No problems

  
We fixed it!

  
HELP!

A

- Airway

B

- Breathing

C

- Circulation

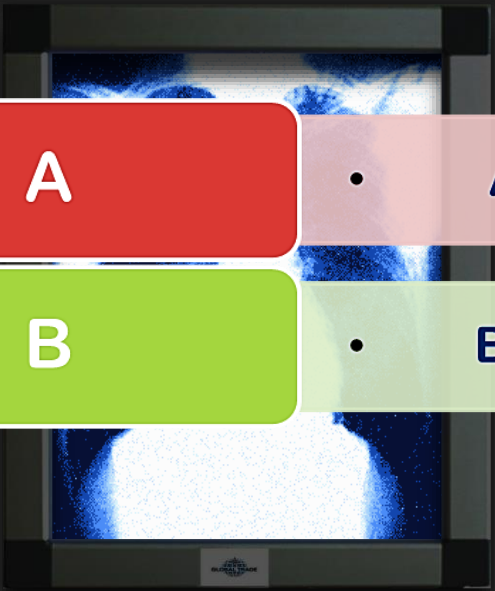
## PERFUSION

ventilation

respiration

distribution





**A**

- Airway

**B**

- Breathing

PERFUSION		
ventilation	respiration	distribution



Patient name: **George Mobley**  
 Age: 43  
 Weight: 94kg

PMH:  
 • Normally fit and well

Pre-admission:  
 • 3/52 developed c.inf (recent field trip with students)  
 • G.P. Tx 2 x Abs - no improvement

2/7 admitted to ED  
 • increased SOB, high temp./rigors, 'unwell'  
+6 hours admitted to MEAU  
 • O2, IV Abs, Paracetamol  
 • No improvement, now oliguric

S/B CCO  
 • Hi Flo O2, IV fluid bolus - min. improvement  
 • ABG reviewed - ref. to Crit. Care  
Admitted to HDU for Level 2 care

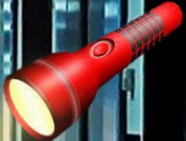
• NIV CPAP  
 \*Sputum sample outstanding\*  
 • Some improvement in ABG - remains critical

**A** • **Airway**

**B** • **Breathing**

PERFUSION		
ventilation	respiration	distribution
✓		
✓	✓	

- Does George have problems with either ventilation or respiration?
- Can we find where these problems are?
- Can we fix these problems?
- If not can we support George's perfusion?
- Do we need help?



A

## • Airway



- Foreign bodies/swelling?
- Chest rising and falling?
- Using accessory muscles?
- Paradoxical breathing?



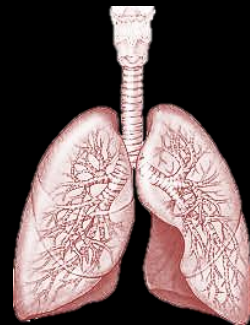
How are you feeling?

A

• Airway



- Audible breath sounds?
- Noisy breathing?
- Gurgling?
- Snoring?
- Stridor?
- Wheezing?



A

• Airway

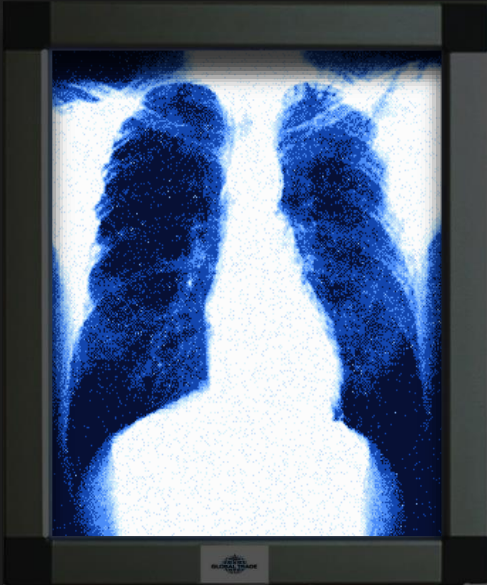


- Can you feel air movement in front of the nose or mouth?



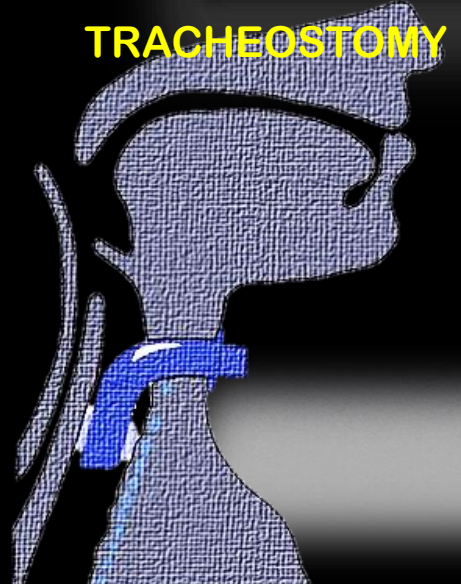
A

• Airway

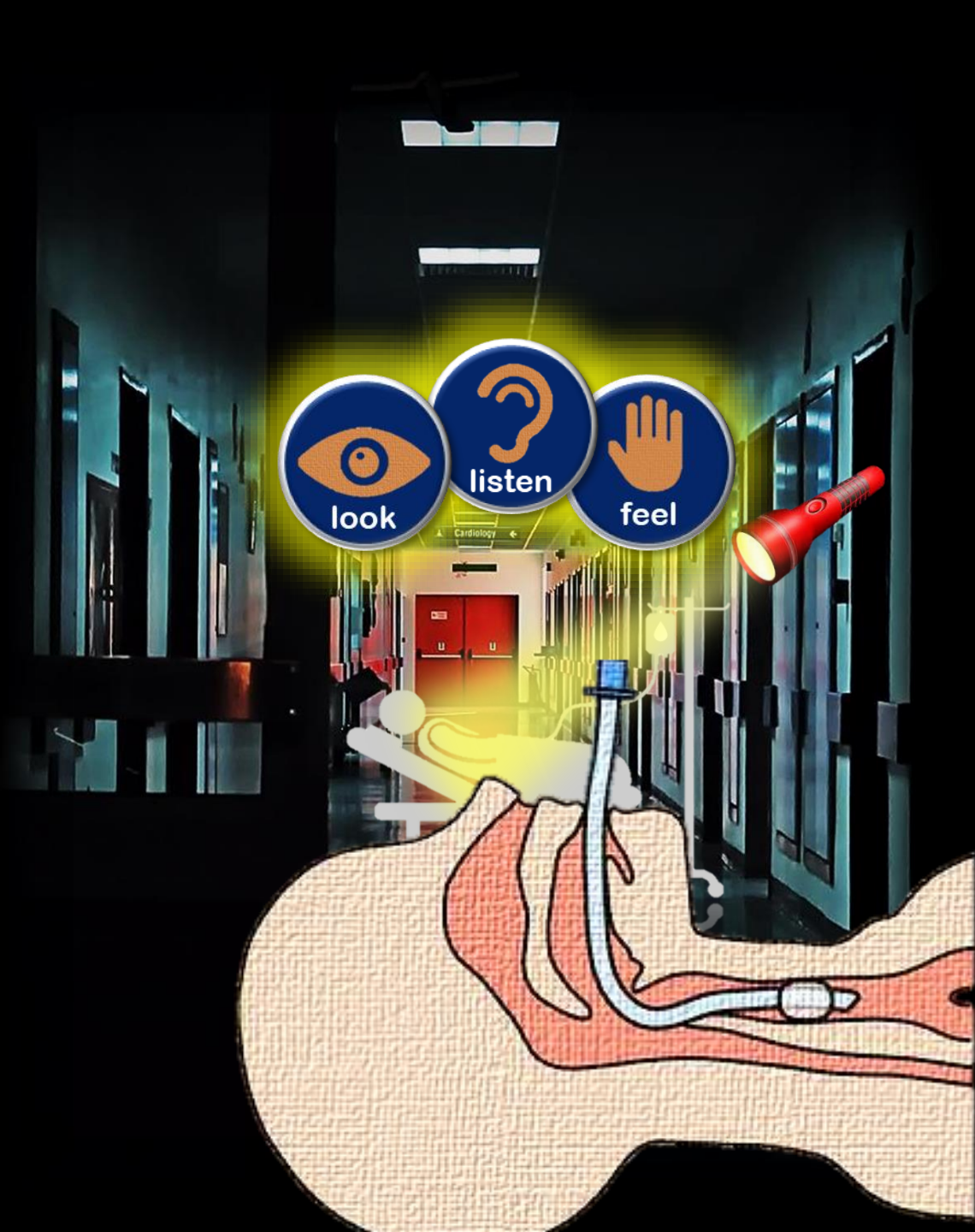


- Position?
- Depth?
- Patent?
- Cuff pressure?
- Leak?
- Subglottic suction?
- Oral hygiene/mouthcare

TRACHEOSTOMY



LARYNGECTOMY



**B**

• **Breathing**



- Saturations
- Oxygen %
- Central/peripheral cyanosis
- Accessory muscles
- Respiratory rate
- Bilateral chest movement
- ABG

**A**

• **Airway**

**B**

• **Breathing**

PERFUSION		
ventilation	respiration	distribution
✓		
✓	✓	



B

• Breathing



- Saturations
- Oxygen %
- Central/peripheral cyanosis
- Accessory muscles
- **Respiratory rate**

1:00



**WARNING!**  
**AUDIENCE PARTICIPATION**

B

• Breathing



- Saturations
- Oxygen %
- Central/peripheral cyanosis
- Accessory muscles
- **Respiratory rate**

1:00



B

## Breathing



- Saturations
- Oxygen %
- Central/peripheral cyanosis
- Accessory muscles
- **Respiratory rate**

1:00

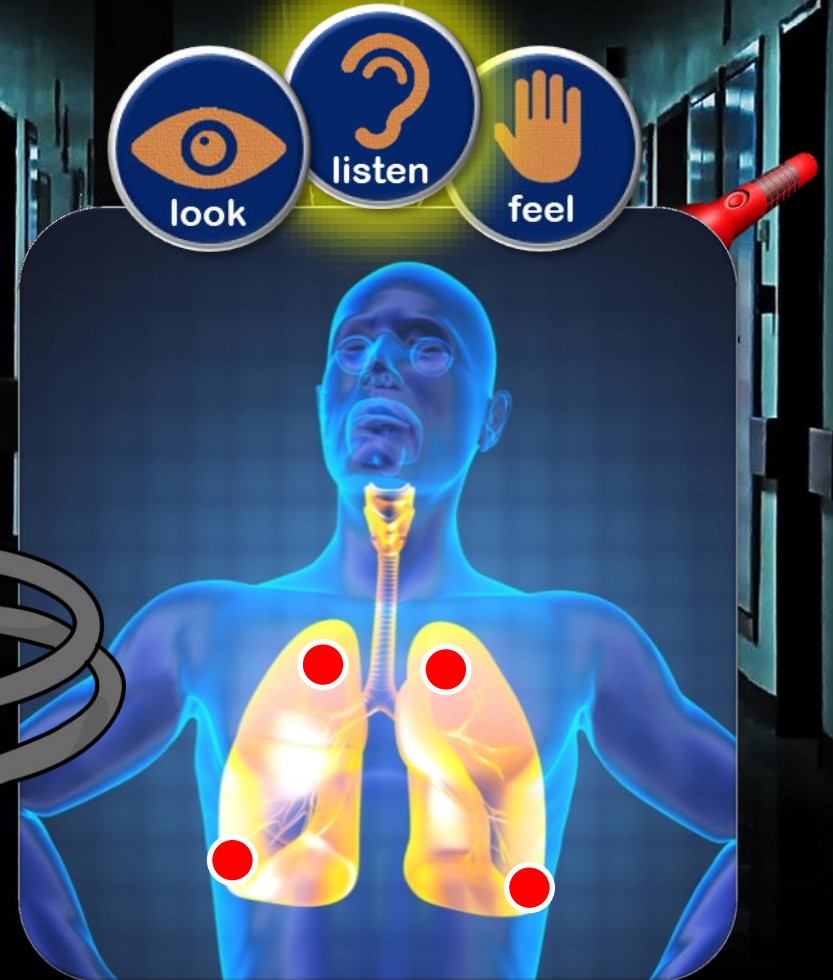


## B

## Breathing



- Breath sounds evident and equal bilaterally?
- Extra sounds apparent?



## B

## Breathing



- Is chest expansion adequate?
- Is chest expansion equal?



Patient name: **George Mobley**

Age: 43

Weight: 94kg

PMH:

- Normally fit and well

Pre-admission:

- 3/52 developed c.inf (recent field trip with students)
- G.P. Tx 2 x Abs - no improvement

2/7 admitted to ED

- increased SOB, high temp./rigors, 'unwell'

+6 hours admitted to MEAU

- O2, IV Abs, Paracetamol
- No improvement, now oliguric

S/B CCO

- Hi Flo O2, IV fluid bolus - min. improvement
- ABG reviewed - ref. to Crit. Care

Admitted to HDU for Level 2 care

- NIV CPAP

\*Sputum sample outstanding\*

- Some improvement in ABG - remains critical

**A**

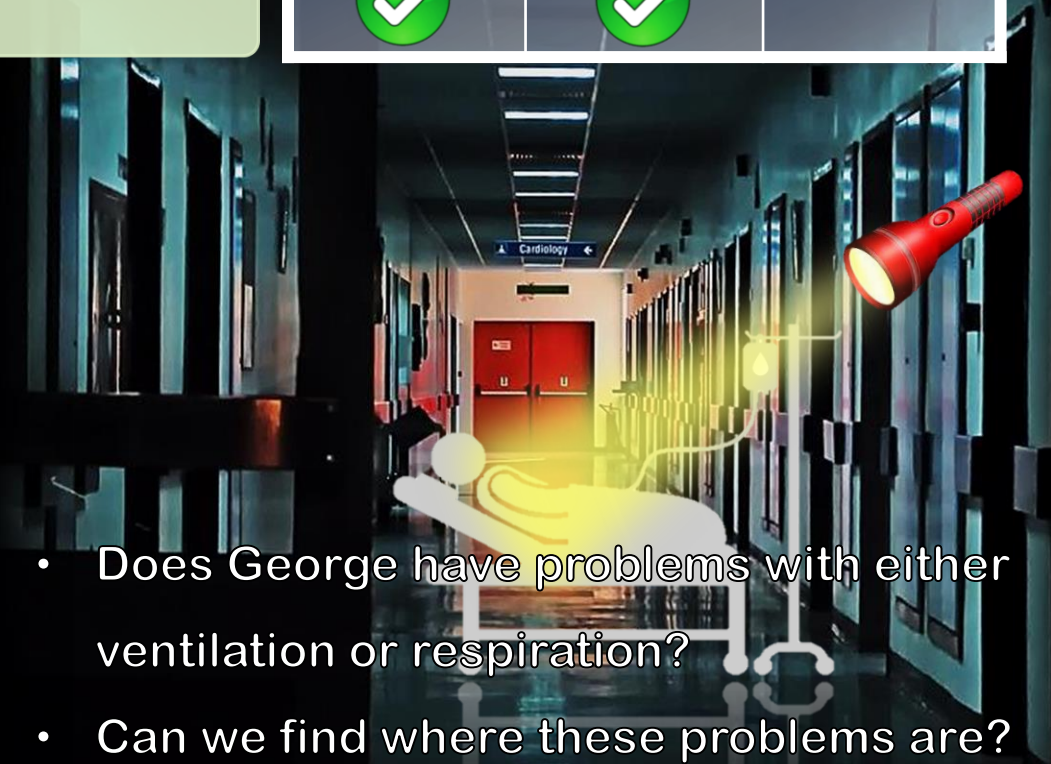
• **Airway**

**B**

• **Breathing**

PERFUSION		
ventilation	respiration	distribution
✓		
✓	✓	

- Does George have problems with either ventilation or respiration?
- Can we find where these problems are?
- Can we fix these problems?
- If not can we support George's perfusion?
- Do we need help?



2/7 admitted to ED  
• increased SOB, high temp./rigors, 'unwell'  
+6 hours admitted to MEAU  
• O2, IV Abs, Paracetamol  
• No improvement, now on  
S/B CCO  
• Hi Flo O2, IV fluid bolus  
• ABG reviewed - ref. to Crit. Care  
Admitted to HDU for Level 2 care  
• NIV CPAP  
\*Sputum sample outstanding\*  
• Some improvement in ABG - remains critical

**A** • Airway

**B** • Breathing

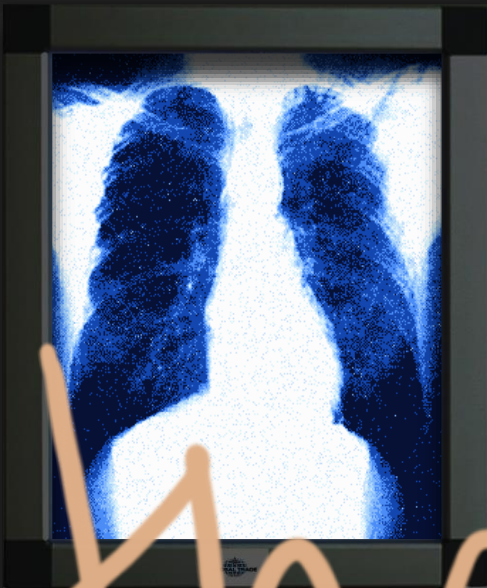
PERFUSION		
ventilation	respiration	distribution
✓		
✓	✓	

- 
- Does George have problems with either ventilation or respiration?
  - Can we find where these problems are?
  - Can we fix these problems?
  - If not can we support George's perfusion?
  - Do we need help?



Any Questions?





Thank you!

